



Jamie Broderick

Director

Impact Investing Institute

20 October 2020

www.impactinvest.org.uk

Impact Investing Institute aims to accelerate the growth and improve the effectiveness of the impact investing market

Impact investment: *investment made with the intention to generate positive, measurable, social and environmental impact alongside a financial return.*

We aim to deliver change by:



Educating and raising awareness through communications, events, and engagement programmes



Providing useful tools and information on impact investing



Advocating for regulation and policies that support impact investing

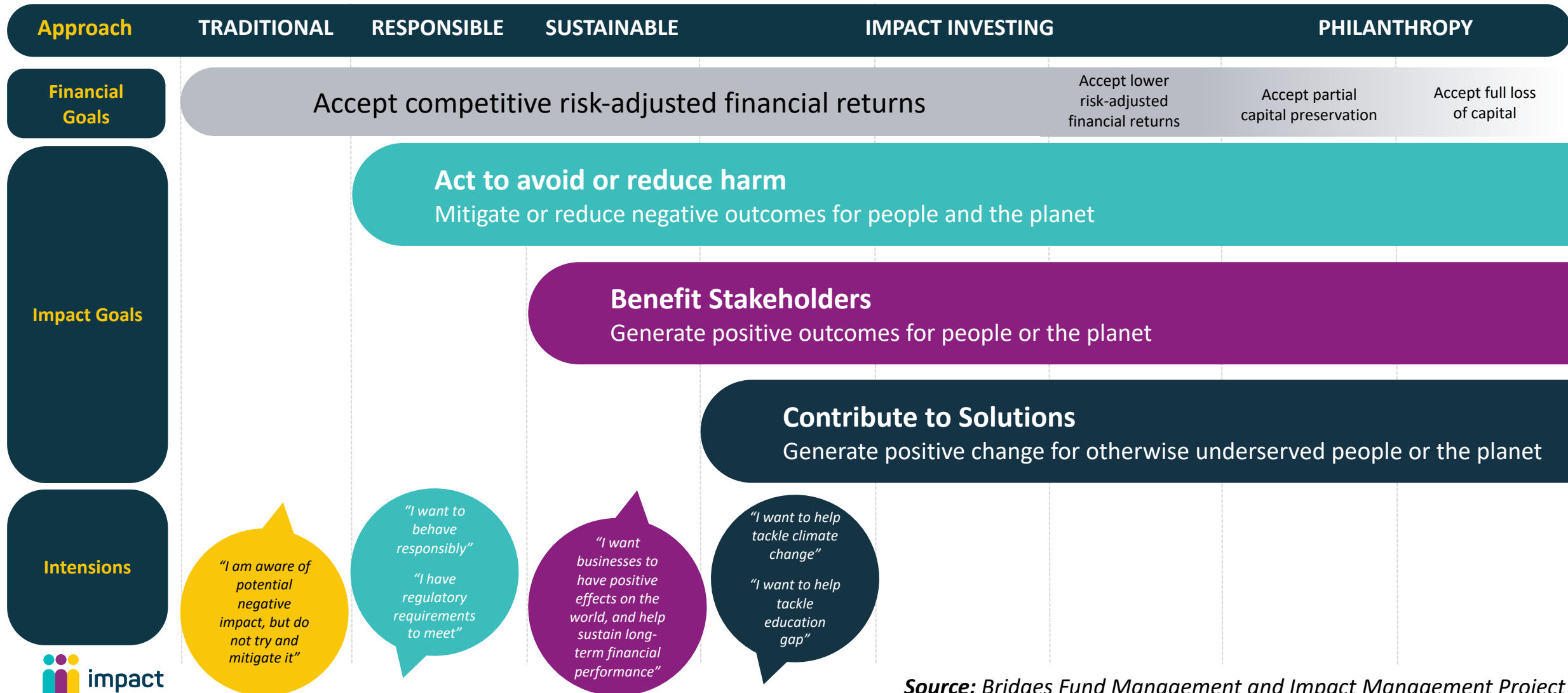
Our core funders



Founding supporters



Spectrum of capital – The ABCs of sustainable investing



Climate change has climbed to the top of the risks that institutions and governments are concerned about

	2019	2013	2011	2009
1	Global temperature change	Resource scarcity	Depression	Depression
2	Global trade collapse	Stagnation	Sovereign default	Hyperinflation
3	Cyber warfare	Global temperature change	Hyperinflation	Excessive leverage
4	Resource scarcity	Depression	Banking crisis	Currency crisis
5	Currency crisis	Global trade collapse	Currency crisis	Banking crisis
6	Depression	Banking crisis	Climate change	Sovereign default
7	Infrastructure failure	Sovereign default	Political crisis	Climate change
8	Banking crisis	Currency crisis	Insurance crisis	Political crisis
9	Sovereign default	Deflation	Protectionism	Insurance crisis
10	Stagnation	Health progress backfire	Euro breakup	Protectionism
11	Biodiversity collapse	Nuclear contamination	Resource scarcity	Disunity in Europe
12	Health progress backfire	Extreme longevity	Major war	End of capitalism
13	Nuclear contamination	Insurance crisis	End of fiat money	End of fiat money
14	Abandonment of fiat money	Terrorism	Infrastructure failure	War
15	Extreme longevity	Infrastructure failure	Killer pandemic	Killer pandemic

The link between climate and capital has become more evident to retail investors

Five ways to lower your carbon footprint



Based on:

- Average working lifetime of Swedish worker
- Amount invested based on Swedish worker average
- Sustainable investments defined as low-carbon
- Compared to traditional investments, including fossil fuel companies
- Scope 1 & 2 emissions only
- Measures carbon footprint, not reduced emissions

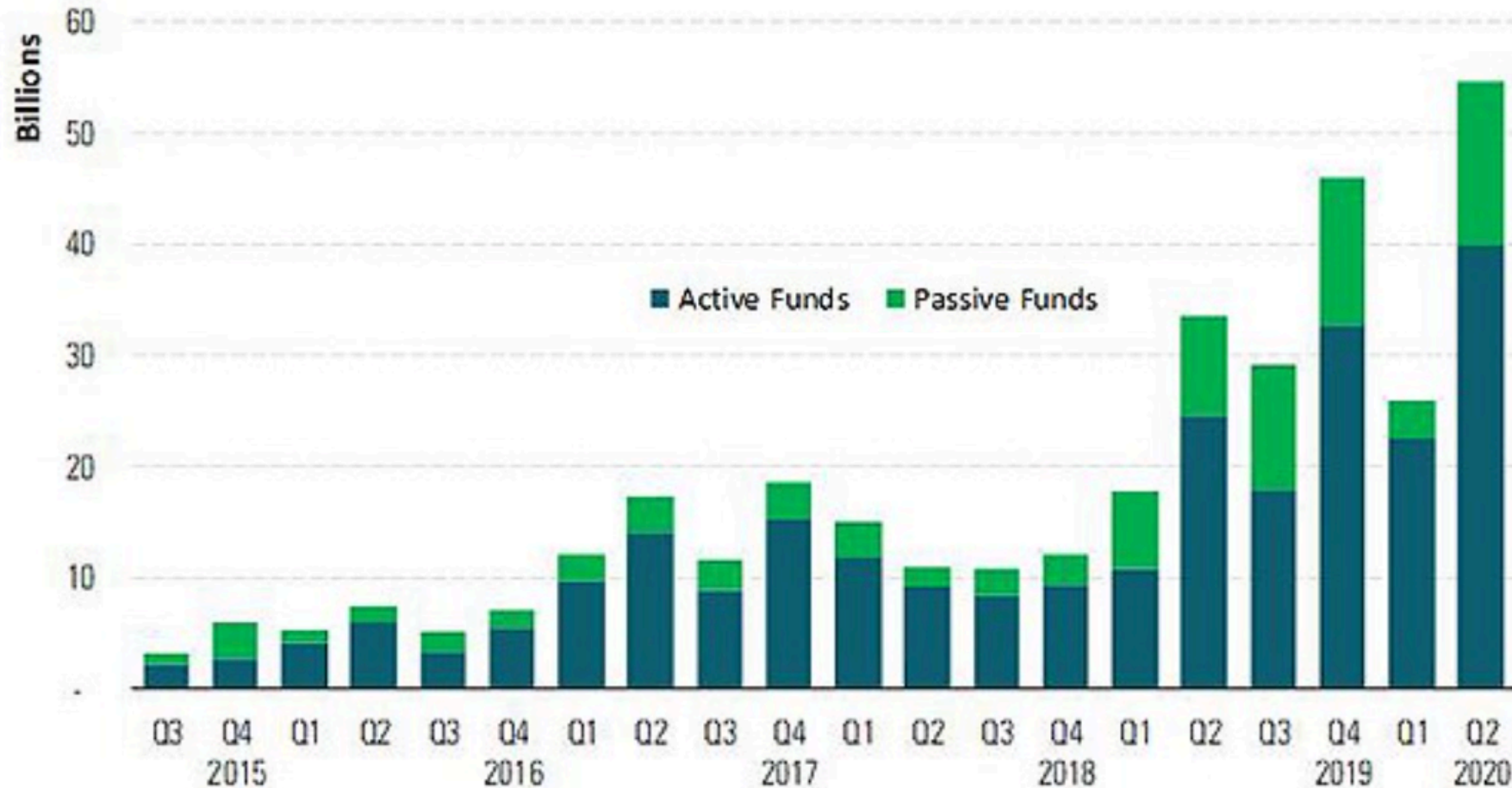
87% of global HNW investors say that climate change now affects their investment choices.

The climate crisis has created a tipping point in the urgency around values-aligned funding for societal needs



European ESG funds have been breaking records for flows since 2018

Quarterly European sustainable fund flows (€ billions)



Source: Morningstar Direct, Manager Research. Data as of July 2020.

...and UK funds are now catching up

ESG equity fund flows in the UK (£ millions)





www.impactinvest.org.uk