

GenIP[®]

**GenAI services to help organisations
evaluate & commercialise new technologies**

© 2024 GenIP PLC | All Rights Reserved

Disclaimer

IMPORTANT: You must read the following notices and liability disclaimers and exclusions before continuing. The following applies to the following presentation (including any accompanying oral presentation, question and answer session and any other document or materials distributed at or in connection with this Presentation) (the “Presentation”) and you are therefore advised to read this document carefully before reading, assessing or making any other use of this Presentation. This Presentation is confidential and is not for release, publication or distribution, in whole or in part, directly or indirectly in or into or from the United States of America (including its territories and possessions, any state of the United States and the district of Columbia), Australia, Canada, New Zealand, the Republic of South Africa, Japan, their territories or possessions or any other jurisdiction where such distribution would be unlawful (each a “Restricted Territory”). Any failure to comply with these restrictions may constitute a violation of applicable securities laws. This Presentation is provided on a confidential basis and is personal to the recipient and has been prepared and issued by, and is the sole responsibility of, GenIP Plc (the “Company”).

This document is being provided for general information only in connection with the Company and its proposed: (i) placing of new and existing ordinary shares in the capital of the Company (the “Placing”); and (ii) admission of the entire issued and to be issued share capital of the Company to trading on AIM, a market operated by London Stock Exchange plc (the “Admission”). This Presentation does not constitute or form part of an offer or invitation or inducement or commitment to purchase or underwrite or subscribe for any securities of the Company or any of its affiliates to any person in any jurisdiction and it should not be relied on in connection with a decision to purchase, underwrite or subscribe for any such securities (including, without limitation any jurisdiction to whom or to which such offer or invitation is unlawful). This Presentation does not constitute a recommendation by the Company, Beaumont Cornish Limited (“Beaumont Cornish”), Novum Securities Limited (“Novum”) or their respective shareholders, directors, officers, partners, employees, agents, affiliates, representatives or advisors (“Affiliates”) regarding any decision to sell or purchase or subscribe for securities in the Company.

This Presentation does not comprise nor contain all the information that would be required for an AIM admission document or a prospectus relating to the Company nor does it give or purport to give legal, tax or financial advice. The contents of this Presentation have not been examined or approved by the Financial Conduct Authority, London Stock Exchange plc or any other regulator, nor is it intended that the Presentation will be so examined or approved. At present, no decision has been made to proceed with the Placing and/or Admission and this Presentation should not be taken as any form of commitment on behalf of the Company to proceed with any transaction. If a decision is made to proceed, recipients of this Presentation who intend to subscribe for or purchase securities in the Company are reminded that any such subscription or purchase may only be made on the basis of the information and terms and conditions contained in the AIM admission document and any supplementary AIM admission document (“Admission Document”) and must be made on the basis of their own judgement as to the merits of the Company and the suitability of the shares in the Company for their purposes, having taken all such professional or other advice as they consider necessary or appropriate in the circumstances.

The information in this Presentation is provided as at the date of this Presentation (unless otherwise stated) and is preliminary in nature, subject to updating, completion, revision and further verification. In furnishing this Presentation, neither the Company nor Beaumont Cornish nor Novum undertake or agree to any obligation to provide the recipient with access to any additional information or to update the Presentation or to correct any inaccuracies in, or omissions from this Presentation which may become apparent. No reliance may be placed for any purpose whatsoever on the information or opinions contained or expressed in this Presentation or on the accuracy, completeness, correctness or fairness of such information and opinions. The information in any Admission Document will supersede all information provided to recipients before the date of the Admission Document and such information may be different to a material degree from this Presentation and may contain additional information. Should any such Admission Document be published it will be available on the Company’s website.

This Presentation is the sole responsibility of the Company and is preliminary in nature, confidential and supplied to the recipients solely for information and may not without the consent of each of the Company’s nominated adviser, Beaumont Cornish, the Company’s Broker, Novum, and the Company be reproduced, disseminated, distributed or otherwise disclosed to any other person or published, in whole or in part, for any purpose. No reliance may be placed for any purpose whatsoever on this Presentation or the completeness or accuracy of this Presentation. To the fullest extent permitted by law or regulation, neither the Company, Beaumont Cornish, Novum, nor any of their respective Affiliates accept any responsibility whatsoever, and make no representation, warranty, or other assurance is made or given, in either case, expressly or impliedly for the contents of the Presentation, including its accuracy or completeness or any other statement or opinion made or purported to be made. Accordingly, no such person will be liable for any direct, indirect or consequential loss or damage suffered by any person resulting from the use of this Presentation, or for any opinions expressed by any such person, or any errors, omissions or misstatements made by any of them. No duty of care is owed or will be deemed to be owed to any recipient or any other person in relation to this Presentation.

This Presentation may contain forward-looking statements, which relate, among other things, to the Company’s proposed strategy, plans, financial performance and objectives. Forward-looking statements are sometimes identified by the use of terminology such as “believes”, “expects”, “may”, “will”, “could”, “should” “shall”, “risk”, “intends”, “estimates”, “aims”, “plans”, “predicts”, “continues”, “assumes”, “positions” or “anticipates” or the negatives thereof, other variations thereon or comparable terminology. By their very nature, such forward looking information requires the Company to make assumptions that may or may not materialise. Such forward-looking statements may be price sensitive and involve known and unknown risks, uncertainties and other important factors beyond the control of the Company that could cause the actual performance or achievements of the Company to be materially different from such forward-looking statements. Past performance of the Company cannot be relied upon as a guide to future performance. Accordingly, you should not rely on any forward-looking statements and the Company and their Affiliates accept no obligation to disseminate any updates or revisions to such forward looking statements or any other statements in this Presentation. No statement in this Presentation is intended as a profit forecast or a profit estimate and no statement in this Presentation should be interpreted to mean that earnings per share for the current or future financial periods would necessarily match or exceed historical published earnings per share. As a result, you are cautioned not to place any undue reliance on such forward- looking statements. This Presentation contains certain financial information which is subject to rounding or approximation. This Presentation contains certain supplier and brand logos. Such logos are not owned by the Company or its Affiliates and are re-produced in this Presentation for illustration only.

AN INVESTMENT IN THE COMPANY INVOLVES RISK. SEVERAL FACTORS COULD CAUSE THE ACTUAL RESULTS, PERFORMANCE OR ACHIEVEMENTS OF THE COMPANY TO BE MATERIALLY DIFFERENT FROM ANY FUTURE RESULTS, PERFORMANCE OR ACHIEVEMENTS THAT MAY BE PREDICTED OR IMPLIED BY STATEMENTS AND INFORMATION IN THIS PRESENTATION. SHOULD ONE OR MORE OF THESE RISKS OR UNCERTAINTIES MATERIALISE, OR SHOULD UNDERLYING ASSUMPTIONS PROVE INCORRECT, THE ACTUAL RESULTS OF THE COMPANY MAY VARY MATERIALLY FROM THOSE FORECASTED IN THIS PRESENTATION.

This Presentation has not been approved by an authorised person for the purposes of section 21 of the Financial Services and Markets Act 2000 (“FSMA”). The securities in the Company will only be offered and sold to, and this Presentation will only be made, supplied and directed at, investors who are: (a) in member states of the European Economic Area and who are “qualified investors” within the meaning of Article 2(e) of the Prospectus Regulation (EU) 2017/1129 as amended from time to time (“Prospectus Regulation”); and (b) persons in the United Kingdom who are both: (A) “qualified investors” within the meaning of Article 2(e) of the Prospectus Regulation as it forms part of domestic UK law pursuant to section 3 of the European Union (Withdrawal) Act 2018 (as modified by or under EUWA or other domestic law from time to time), and, (B) who are: (i) persons having professional experience in matters relating to investments falling within the definition of “investment professionals” in Article 19(5) of the Financial Services and Markets Act 2000 (Financial Promotion) Order 2005 (the “Order”); (ii) high net worth entities falling within Articles 49(2)(a)-(d) of the Order; or (iii) other persons to whom it can otherwise lawfully be distributed (all such persons in (a), (b) and (c) together being “Relevant Persons”). This Presentation is directed only at Relevant Persons and must not be acted on or relied on by anyone other than a Relevant Person. Any investment, investment activity or controlled activity to which this

Presentation relates is available only to Relevant Persons. Persons of any other description should not view, rely or act upon this Presentation. If you have received this Presentation and you are not a Relevant Person, you must return this Presentation immediately to Beaumont Cornish, Novum or the Company or immediately destroy it and take no further action. This Presentation, or any copy of it, should not be distributed, published, reproduced or otherwise made available in whole or in part by recipients to any other person or in any other country, locality, state or other jurisdiction where such distribution, publication, availability or use may lead to a breach of any legal or regulatory requirement and, in particular this Presentation may not be (a) taken or transmitted or distributed, directly or indirectly, into a Restricted Territory (b) distributed to any U.S. person (as defined in Regulation S under the United States Securities Act of 1933 (as amended)) or (c) distributed to any individual outside a Restricted Territory who is a resident thereof, in any such case for sale or solicitation or invitation to buy or subscribe any securities or in the context where its distribution may be construed as such offer, solicitation or invitation, in any such case except in compliance with any applicable exemption. No action has been taken or will be taken in any jurisdiction by the Company that would permit the possession or distribution of any documents or any amendment or supplement thereto (including but not limited to this

Presentation) in any country or jurisdiction where specific action for that purpose is required. No securities of the Company or member of the Company have been or will be registered under the U.S. Securities Act of 1933, as amended (“Securities Act”) or under the securities laws of any Restricted Territory. Accordingly, subject to certain exceptions, the securities of the Company may not, directly or indirectly, be offered, sold, resold, transferred or delivered within a Restricted Territory or offered or sold to a resident of a Restricted Territory. Any failure to comply with these restrictions may constitute a violation of the laws of the relevant jurisdiction. Beaumont Cornish and Novum, each of which is authorised and regulated by the Financial Conduct Authority, is each exclusively advising the Company and no one else in connection with the proposals set out in this Presentation and will not be responsible to anyone other than the Company for providing the protections afforded to customers of Beaumont Cornish and Novum respectively or for providing advice in relation to this Presentation or any transaction or arrangement referred to in this Presentation. Any other person should seek their own independent legal, investment and tax advice as they see fit. Beaumont Cornish’s responsibilities as the Company’s nominated adviser under the AIM Rules will be owed solely to London Stock Exchange plc and not to the Company, to any of its directors or any other person in respect of a decision to subscribe for or acquire shares or other securities in the Company. Beaumont Cornish and Novum have not authorised the contents of, or any part of, this Presentation and no representation or warranty, express or implied, is made as to any of the contents of this Presentation. By accepting this Presentation you agree to be bound by the foregoing limitations and restrictions and, in particular, will be taken to have represented, warranted and undertaken that: (i) you have read and agree to comply with the contents of this disclaimer; (ii) you are a Relevant Person and you will observe the foregoing provisions, limitations and conditions; (iii) you are located outside of the United States and not a U.S. Person, or acting for the account or benefit of a U.S. Person; and (iv) you agree to keep permanently confidential the information contained in this Presentation or made available in connection with further enquiries and you will not forward this Presentation to any other person, or reproduce this Presentation, in whole or in part, for any purpose.

Investment Highlights



Generative AI analytics industry set to grow to over \$5bn by 2030



Leading Fortune 500 technology company client has doubled the pace of potential orders after GenAI enhancements



Since launching GenAI services, orders worth over 40% of legacy service full-year 2023 revenue have been secured



GenIP has a large addressable market of over 4,000 research institutions and thousands of venture funds and corporations



Generative AI LLMs fully integrated and operational



GenIP's AI algorithms have an extensive range of possible applications

Technology Transfer



Technology Transfer occurs between businesses, universities, and governments to commercialise new innovations



Google, Yahoo and the mRNA vaccine were the products of university technology transfer



Technology Transfer can generate research organisations billions in royalties and support further innovation

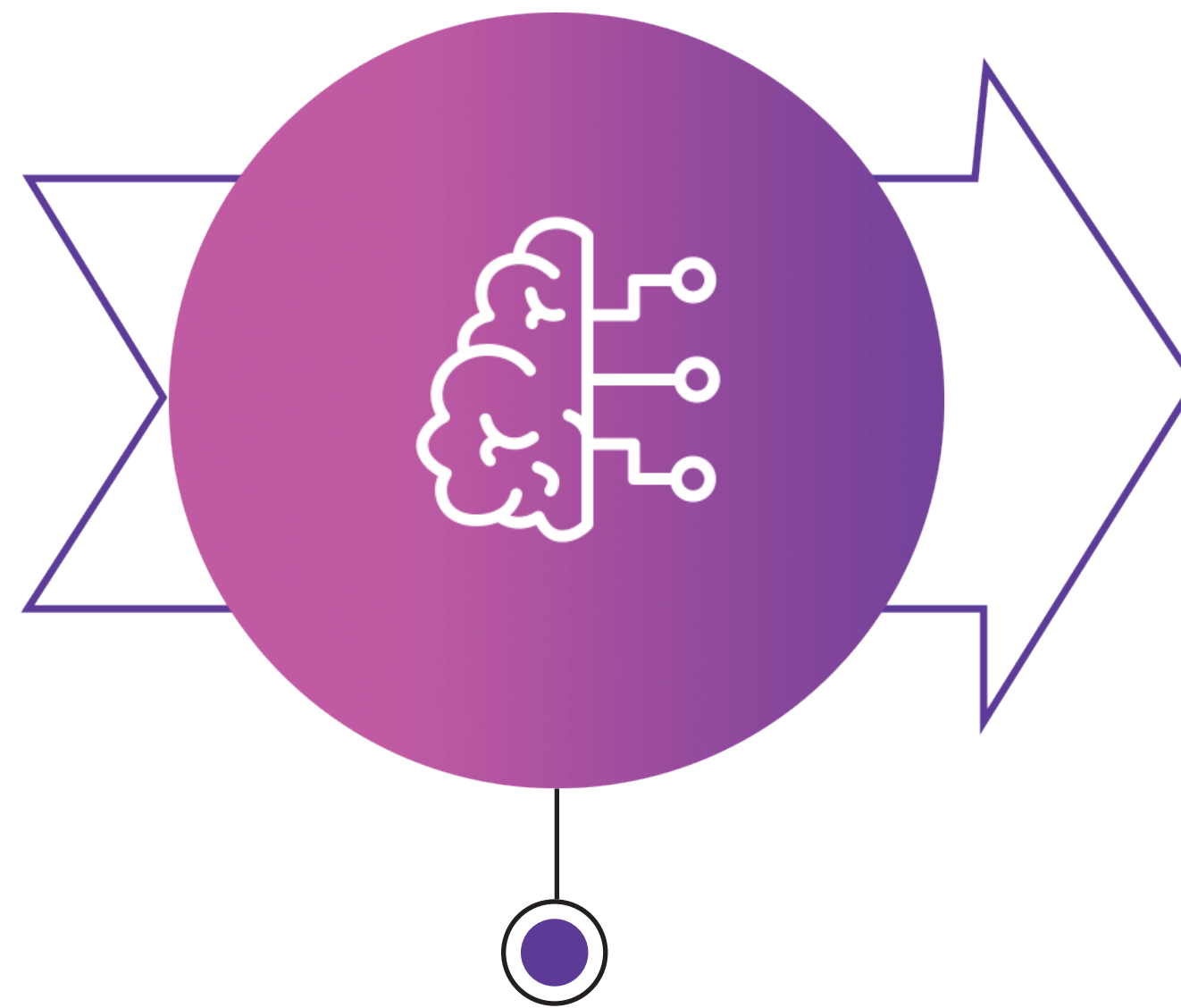


~ 80% of university discoveries do not make it to commercialisation

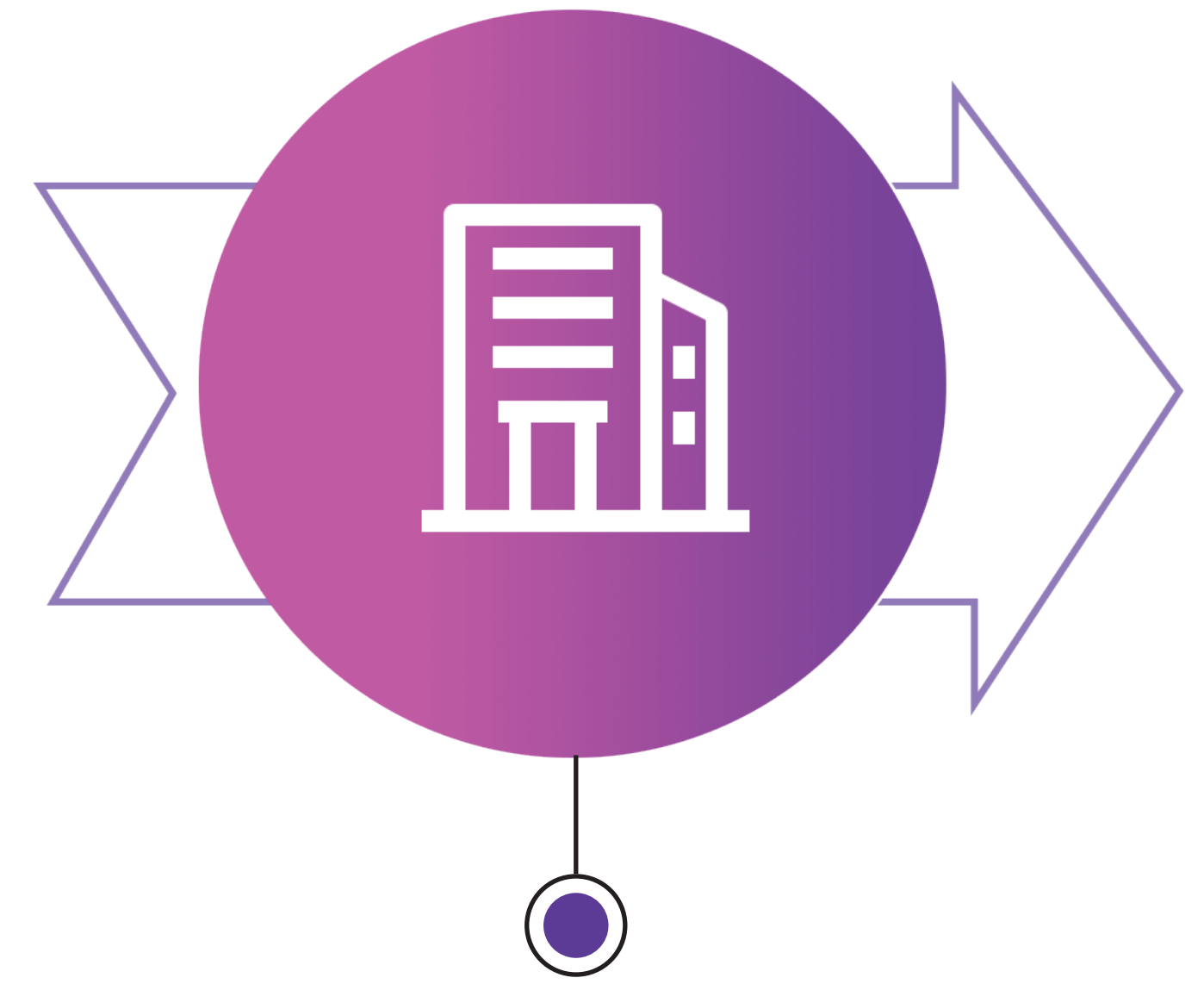
GenIP Technology Transfer



**Research Organisation
Discoveries**



**GenIP GenAI enhanced
services**



Commercialisation

Smarter. Faster. Better.

Two complementary service offerings utilising Generative Artificial Intelligence (GenAI), to help organisations evaluate and commercialise their technology discoveries.¹

inventionevaluator[®]
objective idea analysis

Provides bespoke research reports that assess the market potential of new technological innovations and discoveries using AI-driven proprietary software.

VORTECHS 

Provides executive recruitment services using AI-driven proprietary software to match technology organisations with experienced executives and business leaders.

¹The Services as offered from 1 September 2024 under Invention Evaluator and Vortechs, (augmented on the Predecessor Products as provided within Tekcapital Plc) and significantly transformed by the Company through integrating GenAI technology. The Directors believe that launching a focused stand-alone GenAI based analytics service company will enable Invention Evaluator and Vortechs to expand their deep expertise in this rapidly emerging space, whilst the AIM listing will broaden investor base, provide liquidity and access to institutional and other investors.

Mission & Values

Mission

Bridging the gap between groundbreaking ideas and commercial success, GenIP offers a dual service designed to assess the viability of innovations and connect them with the leadership needed to take them to market and crystallise substantial shareholder value

Values

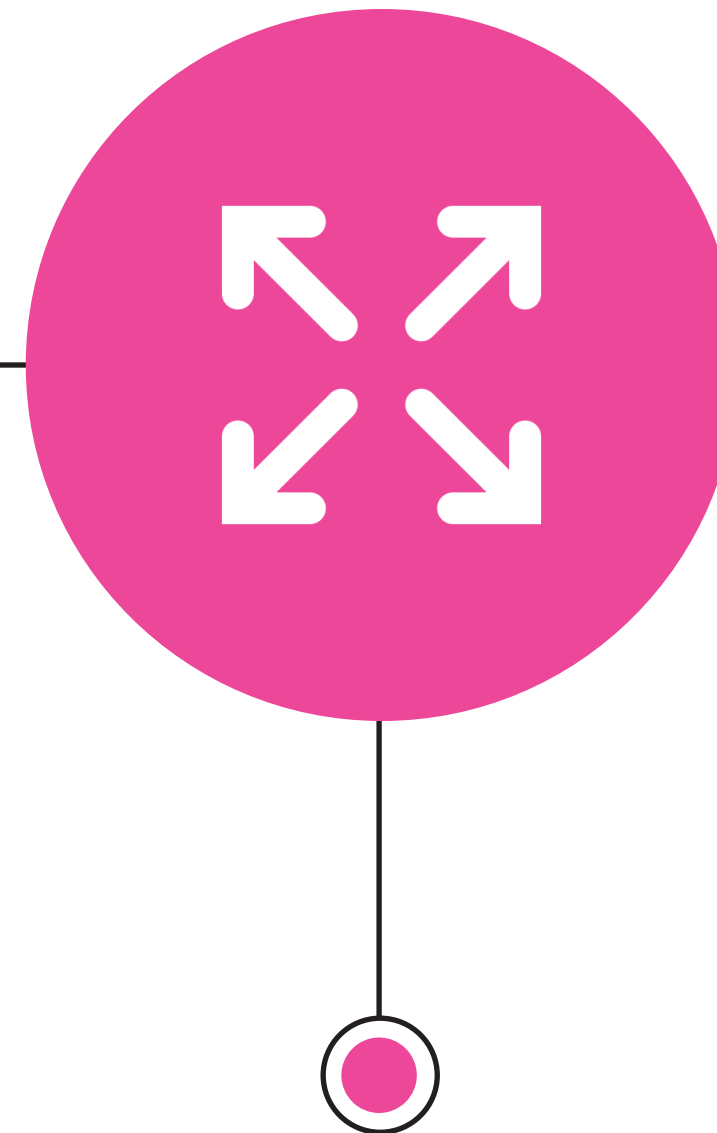
Our core values revolve around fostering innovation and maintaining integrity in all its dealings. It is committed to achieving excellence in its services, providing insightful evaluations of market potential for new innovations and leveraging expertise to enhance the commercialisation process for research organisations. The aim is to help our customers improve their success rate in bringing discoveries to market, from innovation to commercialisation.

Strategy

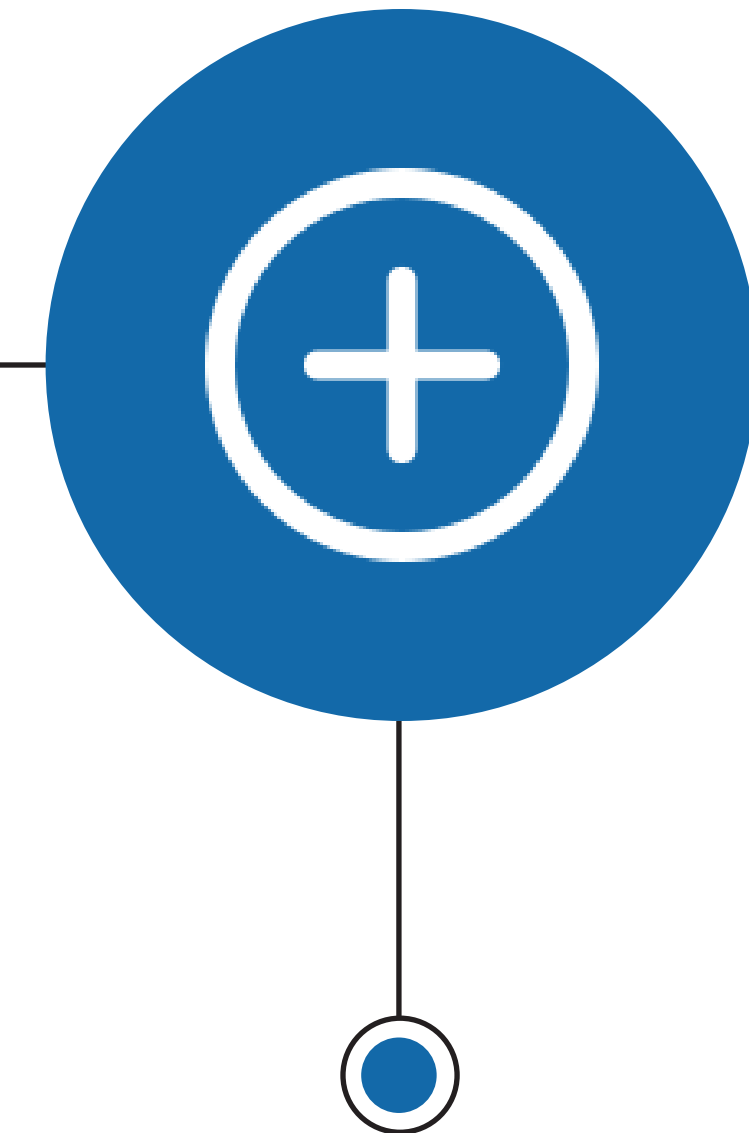
**GenIP's goal is to create a leading Generative AI analytic services company.
To achieve this, the Company has established three strategic pillars:**



Organically grow Invention Evaluator and Vortechs' revenue through institutional and corporate connections as well as increase client pipeline through marketing, advertising and social media spend.



Expand the Generative AI service offerings within Invention Evaluator and Vortechs' to reach new customers and improve margins.



Bolt-on acquisitions of additional Generative AI services that are helpful to our clients and have demonstrated initial market traction.

Invention Evaluator is a bespoke proprietary software, generating comprehensive analytic reports that assess the market potential for new technological innovations and discoveries.

More than 5,800 reports to over 300 research institutions and corporations worldwide have been delivered to date for the pre-AI versions.

Invention Evaluator's New Reports are now enhanced with GenAI algorithms, making the reports more comprehensive, enabling availability of the reports in multiple languages, whilst shortening delivery times and cutting preparation costs.

Invention Evaluator New Report Features



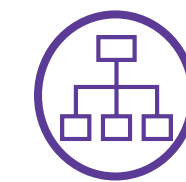
Comprehensive Analysis

Now automated covers technology merits, IP research, and market analysis.



Industry-Expert Analysts

Experienced team ensures high-quality reports.



Proprietary Research Algorithms

Enhance accuracy and depth of analyses.



Independent Analysis

Mitigates risks and provides decision support.



Identify Opportunities

Identifies potential commercial partners for technology progression.



Intellectual Property Analysis

Advantages of GenAI Integration



Market Evaluation

To analyse market trends, demand, and competition for inventions.



Portfolio Analysis

To identify strengths, weaknesses, and opportunities of a new technology and predict future technological and market trends for strategic decisions.



Multilingual Report Delivery

To offer reports in English, including a built-in feature which will in due course offer report in +75 other languages, expanding the reach to a global audience.



Quick Report Generation

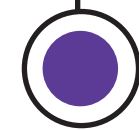
To deliver reports promptly.

GenAI Analytics

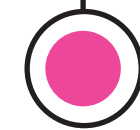
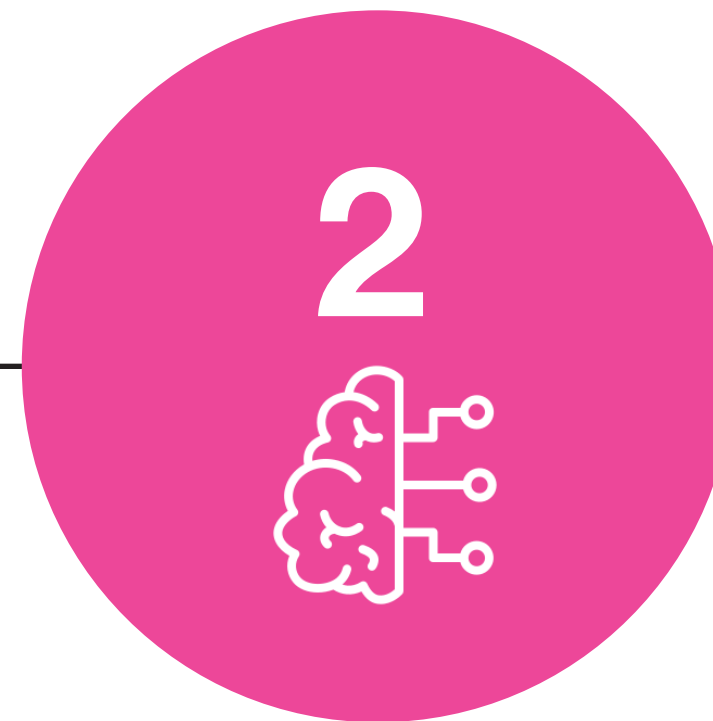
Data-Driven Insights for Strategic Investment Decisions



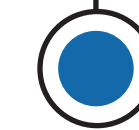
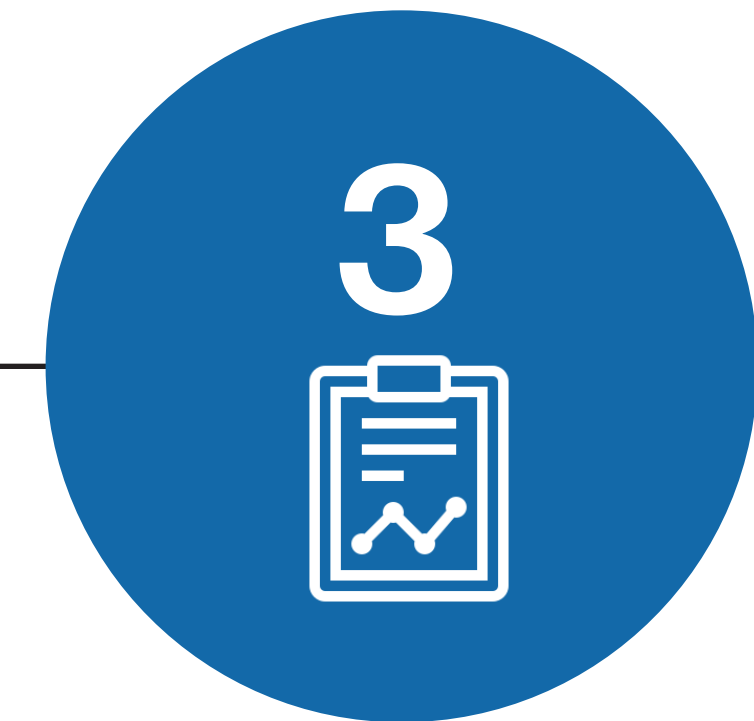
Simple Three Step Process



Submit invention data using online form



Expert evaluators using our proprietary AI system prepare a comprehensive report



Detailed analysis performed and report delivered in ten business days

All information is securely delivered and encrypted through our platform www.inventionevaluator.com

Vortechs serves a diverse client base including large corporations, universities, government agencies and medical research institutions.

The Company's expertise lies in filling positions for individuals capable of bringing new technologies to market.

Vortechs' executive search and evaluation process has been enhanced with Gen AI algorithms, which the Directors believe will increase effectiveness of executive placement services for matching technology organisations with experienced executives and business leaders, whilst improving profitability.

Vortechs Service Features



Diverse client base

Serving global startups, corporations, universities, and research institutions.



Personalized Service

Understanding unique needs and facilitating rewarding connections.



Research Institution Expertise

Numerous successful executive matches for leading research institutions worldwide completed.



Top Talent Delivery

Consistent delivery of high-caliber talent.



Dual Expertise

Recruitment prowess combined with technology commercialization insights.



Unmatched Service Pricing

With a flat fee pricing model the service costs less than traditional executive searches.

Advantages of GenAI Service Enhancements



Strategic Talent Acquisition

AI-powered matchmaking algorithms for candidate sourcing, to match candidates with job openings based on skills, experience, and cultural fit, increasing the likelihood of finding the best candidate and reducing time to hire.



Predictive Performance Analysis

Gen AI enables faster analysis of historical data on successful hires and job performance metrics, to identify patterns and correlations in predicting the likelihood of candidate success in specific roles.



Bias Reduction in Hiring

AI-powered recruitment tools can help mitigate unconscious biases in the hiring process, by focusing solely on candidate qualifications and skills, promoting diversity and inclusion within the workforce.

Vortechs Recruitment Process



Client Engagement

Understand needs and draft job descriptions.



Job Posting

Share openings on multiple platforms and distribute to our broad network of clients and industry connections.



Candidate Screening

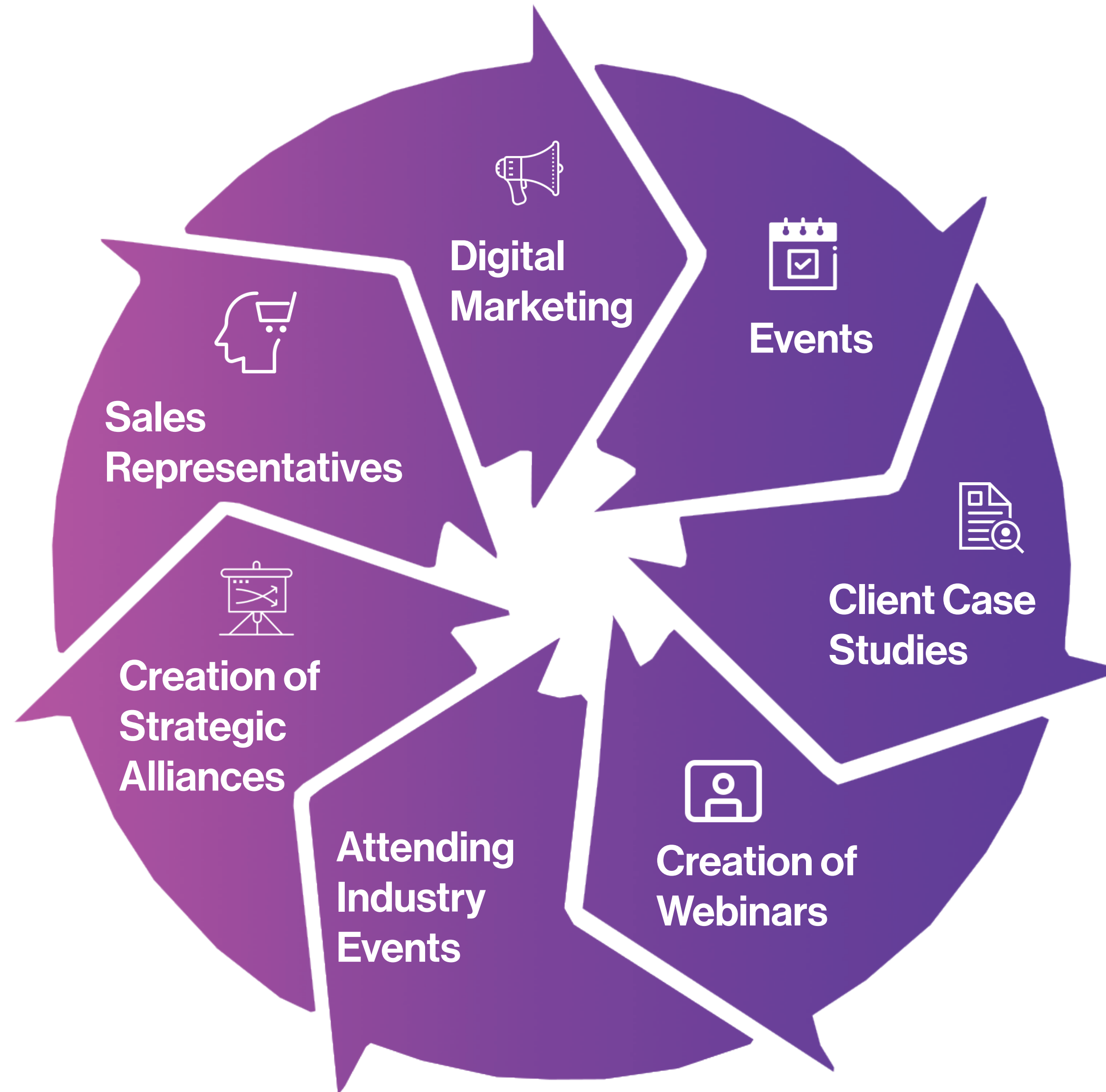
Our GenAI service quickly identifies available candidates based on skills and cultural fit. Shortlist candidates and ensure unbiased evaluations.



Selection & Follow-Up

Tech recruitment experts select the most qualified candidates to present to clients. Conduct interviews, perform background checks, and monitor new hire performance.

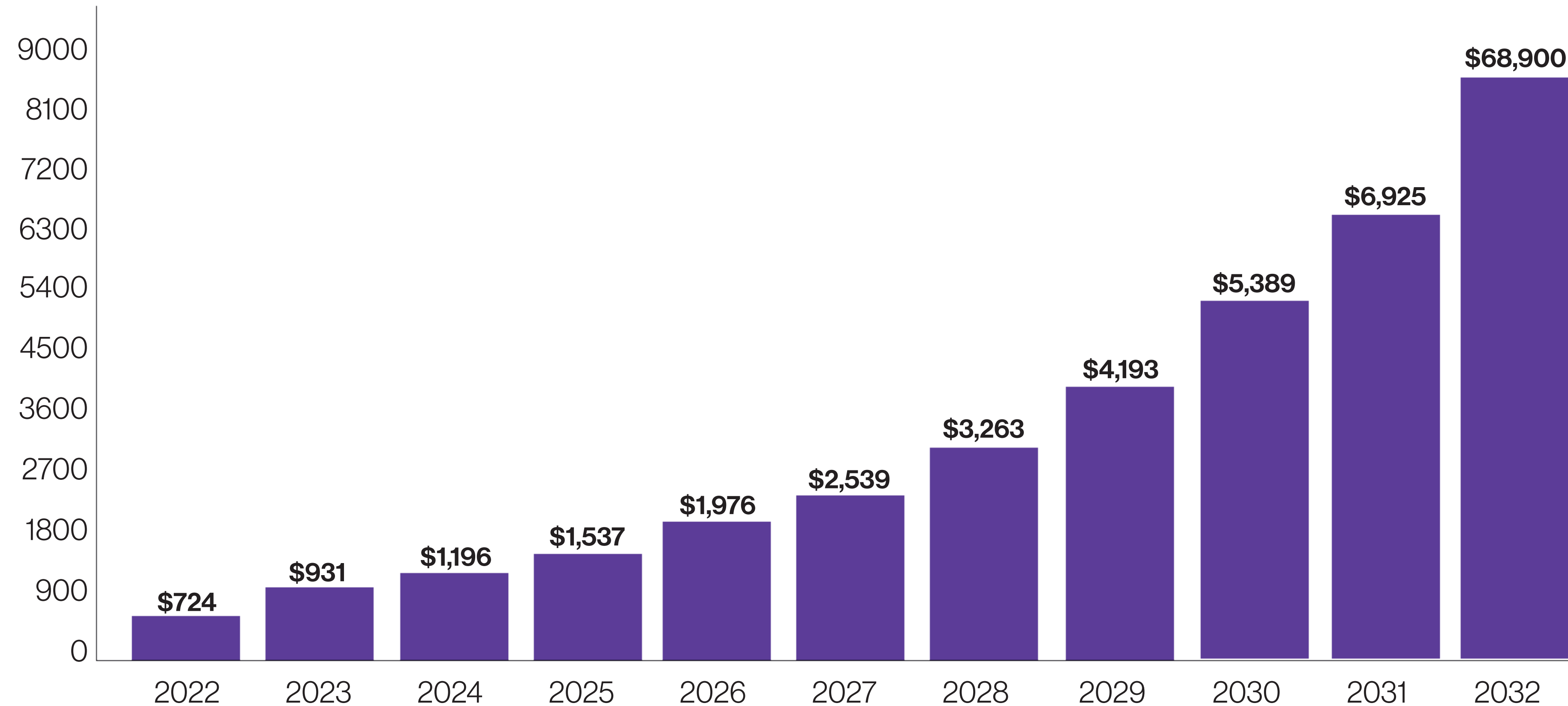
Marketing Strategy



GenIP Market Segment

Demand for GenAI Analytics Services is Expected to Rapidly Expand

Generative AI In Analytics Market Size, 2022 to 2032 (USD Million)



Source: <https://www.precedenceresearch.com/generative-ai-in-analytics-market>

The Board



Melissa Cruz
CEO

Melissa helps our global clients create marketplace value from university-developed IP. With a background in marketing and sales, Melissa collaborates with a diverse set of organizations in the United States, China, Europe, and Latin America to facilitate technology transfers between developed and developing countries. Melissa plays a crucial role in strengthening clients' in-house tech-transfer teams. Acting as a client advocate, she ensures that their needs are understood and met by working closely with our executive search group. She has contributed to the organization of international business events across Latin American countries. Melissa received her B.A. in International Business and an M.S. in Marketing from Florida International University.



Kevin Fitzpatrick
CFO

Kevin is a CFO/Finance Director with over 20 years' experience in SME and entrepreneurial businesses across various sectors and industries including Tech, SaaS, Media, and Retail. He has held numerous board positions with both quoted public and private businesses with full executive responsibility for finance, legal and corporate finance, most recently with Stanley Gibbons plc. He is internationally experienced having operated successfully in Europe, USA, and Africa. He graduated from University College Dublin with a BA(Hons) in Economics and qualified as a Chartered Accountant with Deloitte.



Lord David Willetts
NED & Non-Executive Chairman

The Rt Hon Lord Willetts FRS is Chairman of the U.K. Space Agency, President of the Resolution Foundation and former U.K. Minister for Universities and Science. He served as the Member of Parliament for Havant (1992-2015), and previously worked at HM Treasury and the No. 10 Policy Unit. Lord Willetts is a visiting Professor at King's College London, former Chair of the British Science Association and a member of the Council of the Institute for Fiscal Studies. He is also an Honorary Fellow of Nuffield College, Oxford. Lord Willetts has written widely on economic and social policy. His book 'The Pinch', which focused on intergenerational equity, was published in 2010, and he recently published 'A University Education'. Lord Willetts is a graduate of Oxford University and has been awarded numerous honorary doctorates.



Professor David Gann CBE
NED

David is a leader in the field of innovation, technology management and entrepreneurship and was recently Chairman of the UK Atomic Energy Authority. He serves as a Professor of Innovation and Entrepreneurship, Pro-Vice-Chancellor at Oxford University. Previously he served as Vice-President (Innovation) at Imperial College London and was Professor of Innovation and Technology Management at Imperial College Business School. He holds a PhD in Industrial Economics, an MSc in Science Policy and is a Chartered Civil Engineer. He is a Fellow of the Institution of Civil Engineers, Honorary Fellow of the Royal College of Art and Fellow of the City & Guilds Institute. David holds a Fellowship with Magdalen College, Oxford and is non-executive director of Directa Plus plc and VenCap International plc.

The Management Team



Melissa Cruz
CEO

Melissa helps our global clients create marketplace value from university-developed IP. With a background in marketing and sales, Melissa collaborates with a diverse set of organizations in the United States, China, Europe, and Latin America to facilitate technology transfers between developed and developing countries. Melissa plays a crucial role in strengthening clients' in-house tech-transfer teams. Acting as a client advocate, she ensures that their needs are understood and met by working closely with our executive search group. She has contributed to the organization of international business events across Latin American countries. Melissa received her B.A. in International Business and an M.S. in Marketing from Florida International University.



Selwyn Lloyd
CTO

Selwyn has 20+ years entrepreneurial/technology experience in software apps, data, telecoms, publishing and branded goods industries. He has been founder or co-founder of numerous technology companies and led software technology teams for the past 13 years. His clients have included the UK's largest mobile phone operators, ISP's, Universities and Colleges. Selwyn has developed our Innovation Discovery Network which effectively links together the IP output of 4,000 research universities for the first time. Selwyn holds a BA (Hons) from Loughborough University and an MBA from the University of Oxford.



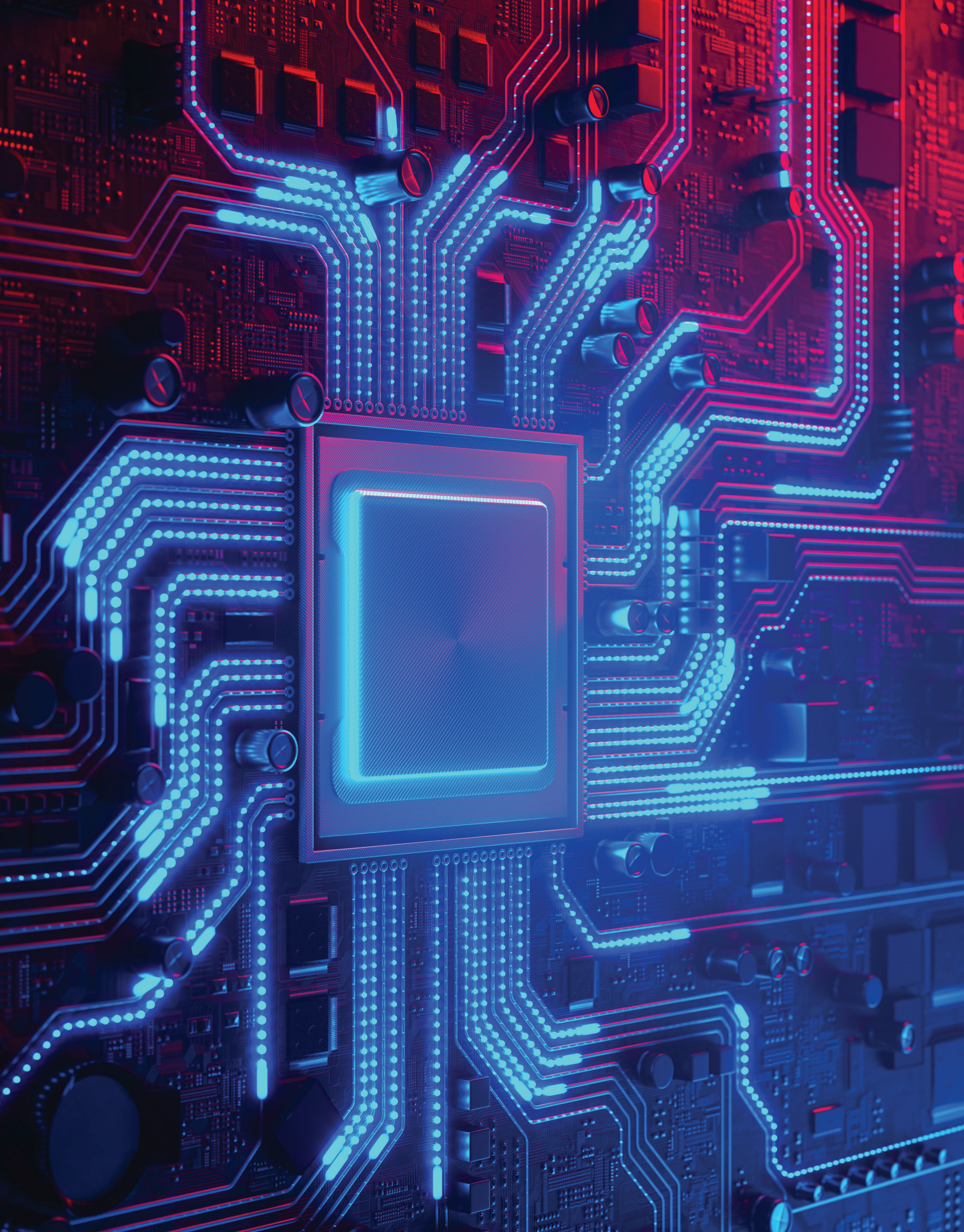
Ana Orti
Manager of Global Client Engagements

Ana has worked for international businesses all over the world including United States, Latin American, & Hong Kong. She helps the Business Development team to create market value for University Intellectual Property (UIP) in the United States and Europe. She believes that building positive client relationships and exploring potential business opportunities are two crucial components to a successful business. Ana has a dual degree in Marketing and International business. She received her BBA from Florida International University and her MBA from EAE School in Barcelona.



Kevin Fitzpatrick
CFO

Kevin is a CFO/Finance Director with over 20 years' experience in SME and entrepreneurial businesses across various sectors and industries including Tech, SaaS, Media, and Retail. He has held numerous board positions with both quoted public and private businesses with full executive responsibility for finance, legal and corporate finance, most recently with Stanley Gibbons plc. He is internationally experienced having operated successfully in Europe, USA, and Africa. He graduated from University College Dublin with a BA(Hons) in Economics and qualified as a Chartered Accountant with Deloitte.

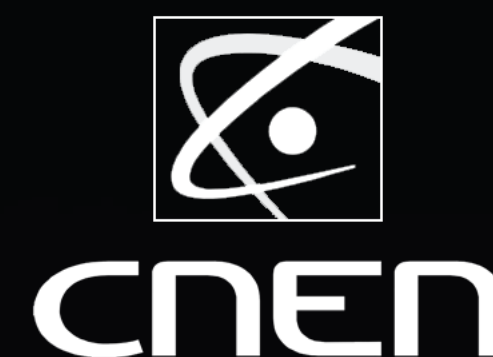


Analyst Team & Science Advisors

Our in-house team of analysts, all of whom hold advanced degrees, brings specialized expertise across a wide range of technology areas. From life sciences and physical sciences to engineering and information and communication technology (ICT), our analysts provide in-depth technology analysis reports that are both comprehensive and insightful.

With their strong academic backgrounds and industry knowledge, our experts are well-positioned to evaluate the commercial potential, innovation prospects, and competitive landscape of emerging technologies. This allows us to deliver tailored reports that meet the specific needs of universities, research institutions and corporations, ultimately facilitating more informed decision-making and accelerating the path to commercialization.

Select Clients*



* for pre-AI enhanced products.

What our Clients Say*

“We have had a great experience with the results of the studies we have requested.”

Patricia Anguita

**Deputy Manager of Innovation Project Commercialization
Pontifical Catholic University of Chile- COPEC Foundation**

“The Invention Evaluator analyses have been very useful and have provided a clear insight into the technologies.”

**Dianela Fuentes, Directora Dirección de Innovación y Transferencia
Vicerrectoría de Investigación, Santiago Chile**

“The Invention Evaluator reports provide us with fantastic perspectives to direct our commercialisation efforts. Stellenbosch University has a diverse and exciting research pipeline so we always need to be aware of the global commercialisation avenues that could be pursued.”

Ravini Moodley, RTTP

**Director Technology Transfer
Stellenbosch University**

* for pre-AI enhanced products.



What our Clients Say*

“The University of Huddersfield utilise many tools in their knowledge transfer activities, to understand the opportunity, technology landscape, prior art and market validation. One of the key tools we use is the Tekcapital’s Invention Evaluator report. This report gives the technology transfer office a very early indication of a technology’s potential for commercialisation and justification to providing further resource to gather additional market evidence and network development for our license and spin out activities. It is an excellent indicator when deciding on resource allocation, initial companies in the field to approach and who else is patenting in the field. It is excellent value for money, on the go-no-go dilemma and has proved value for money in quickly establishing technologies that are likely to fail.”

Paul Field

The University of Huddersfield

“IE Provides a quick impartial overview of a technology’s landscape. Useful for prioritising resources on invention disclosures.”

Murray Dickson

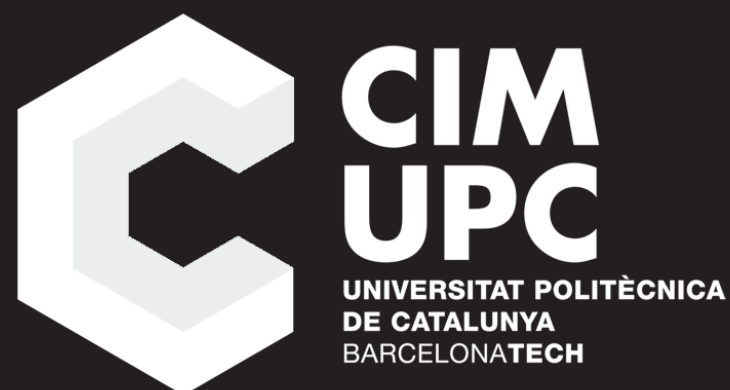
University of Technology Sydney

“CIM UPC has found the Invention Evaluator tool to provide detailed, fast, and accurate analyses of our innovative proposals. The accuracy and thoroughness of these reports have been instrumental in guiding our projects to successful outcomes.”

José María Cabrera

General Director at CIM UPC

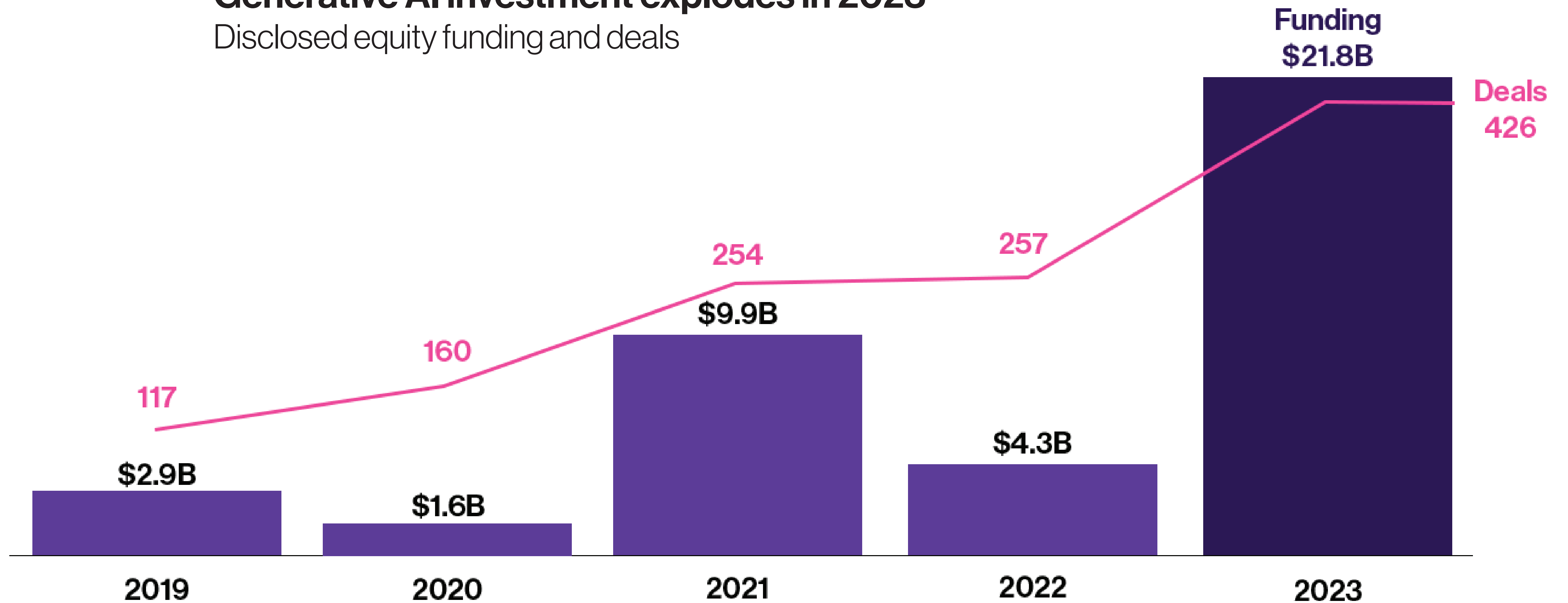
* for pre-AI enhanced products.



2023 Funding in Generative AI startups¹

Generative AI investment explodes in 2023

Disclosed equity funding and deals



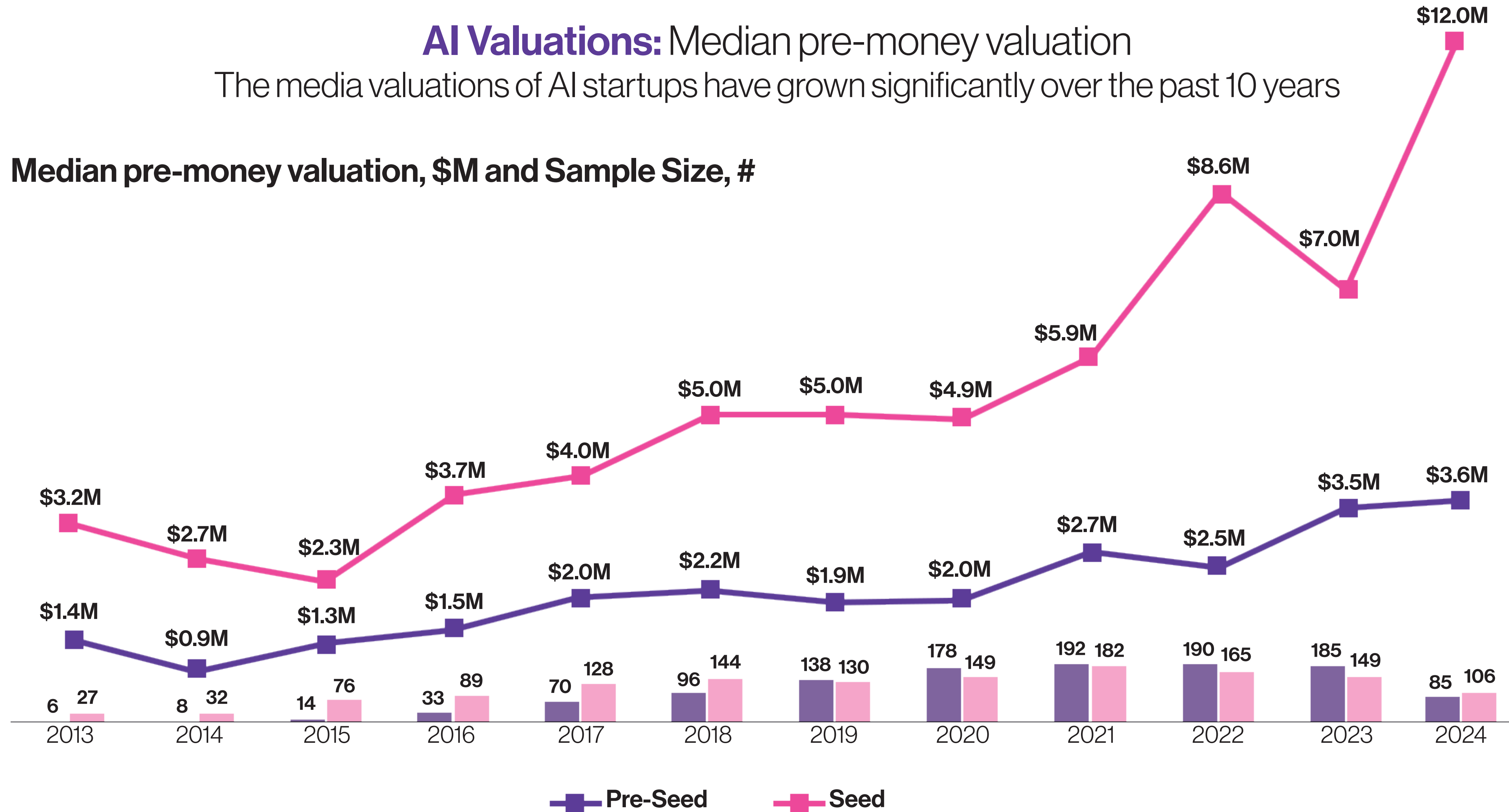
¹ <https://www.cbinsights.com/research/generative-ai-funding-top-startups-investors-2023/>

Recent Gen AI Start-up Valuations¹

AI Valuations: Median pre-money valuation

The media valuations of AI startups have grown significantly over the past 10 years

Median pre-money valuation, \$M and Sample Size, #



¹ <https://aventis-advisors.com/ai-valuation-multiples/>

Thank You

Market Listing: AIM

Funds raised IPO: £1.75m

Ticker: GNIP

Shares in Issue: 17.5m

Percentage in public hands: 26%

GenIP Limited

Email: contact@genip.ai

Telephone: +44 20 3368 3090

Investor Relations Contact:

Redchurch Communications

Email: genip@weareredchurch.com

Address:

**12 New Fetter Lane
London
EC4A 1JP**